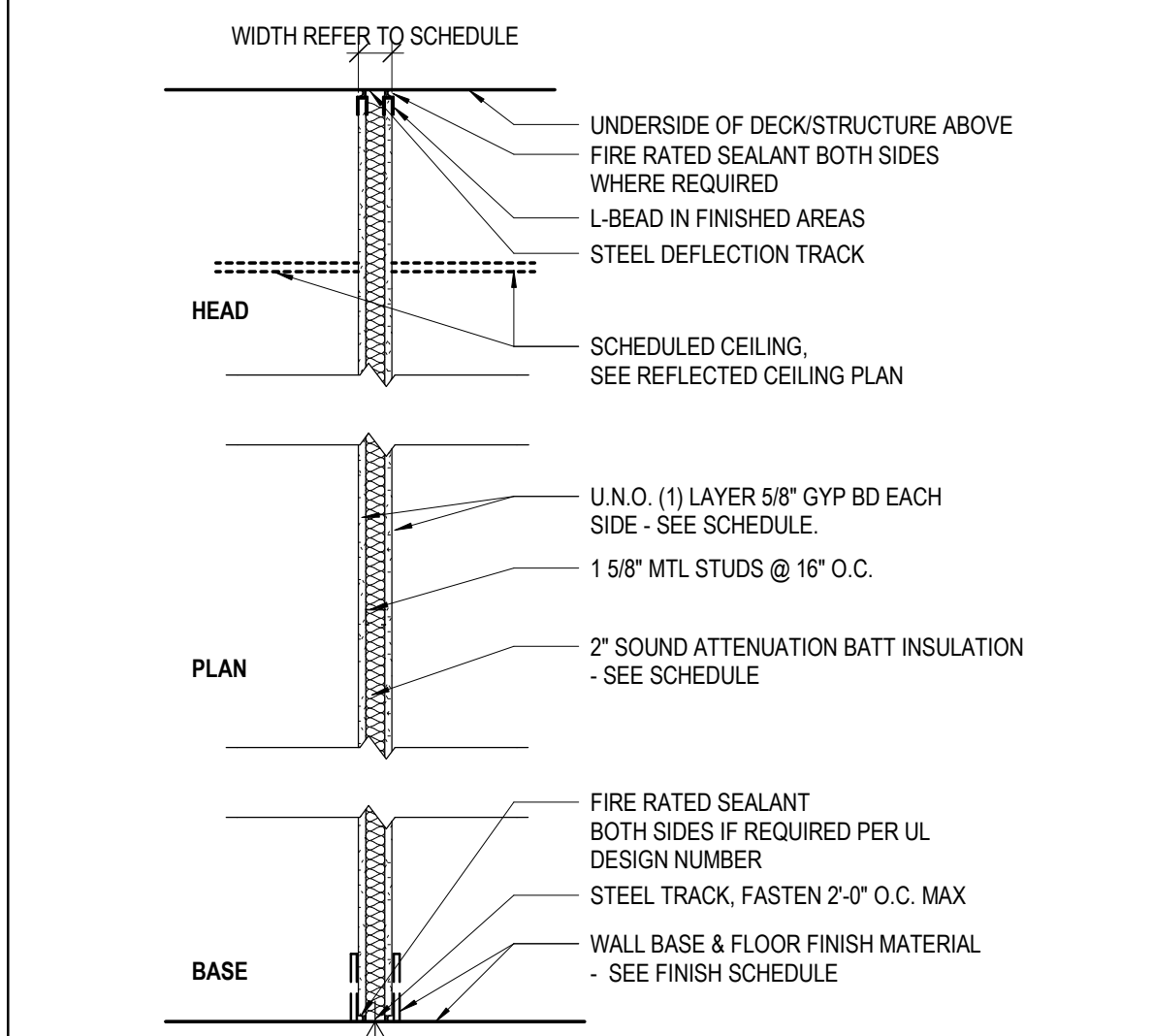
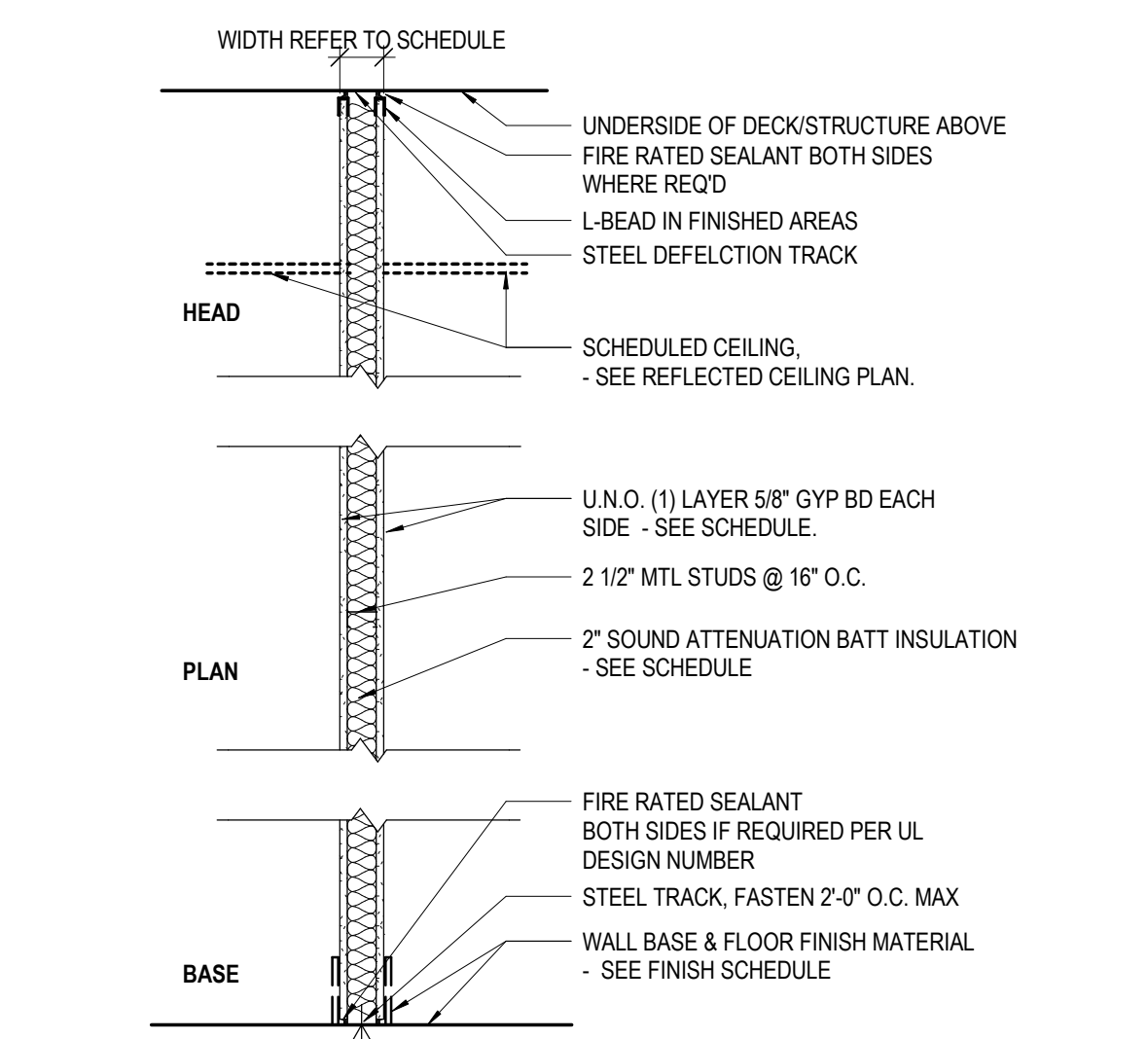


TYPE 1 - 1 5/8" METAL STUD WALL TYPES



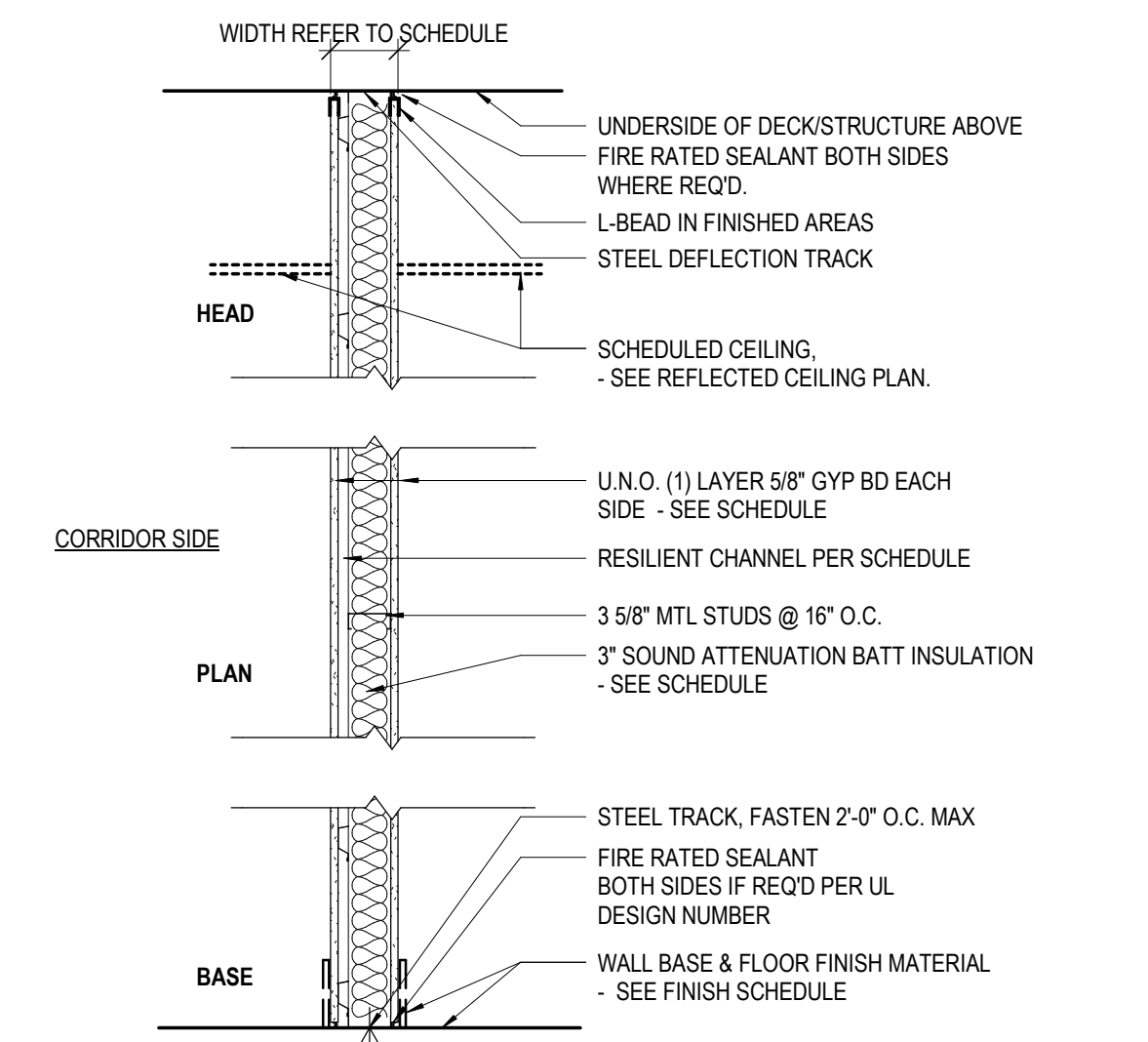
TYPE	WIDTH	STUD WIDTH	GYP. BD. - 1 SIDE	GYP. BD. - 2 SIDES	FIRE RATING	UL #	STC RATING	SOUND INSUL.	CODED NOTES	COMMENTS
2G	3 1/8"	2 1/2"	Yes	No	0HR					
2H	3 1/8"	2 1/2"	Yes	No	0HR			No 04		
2K	3 1/8"	2 1/2"	Yes	No	0HR			No 05		

TYPE 2 - 2 1/2" METAL STUD WALL TYPES



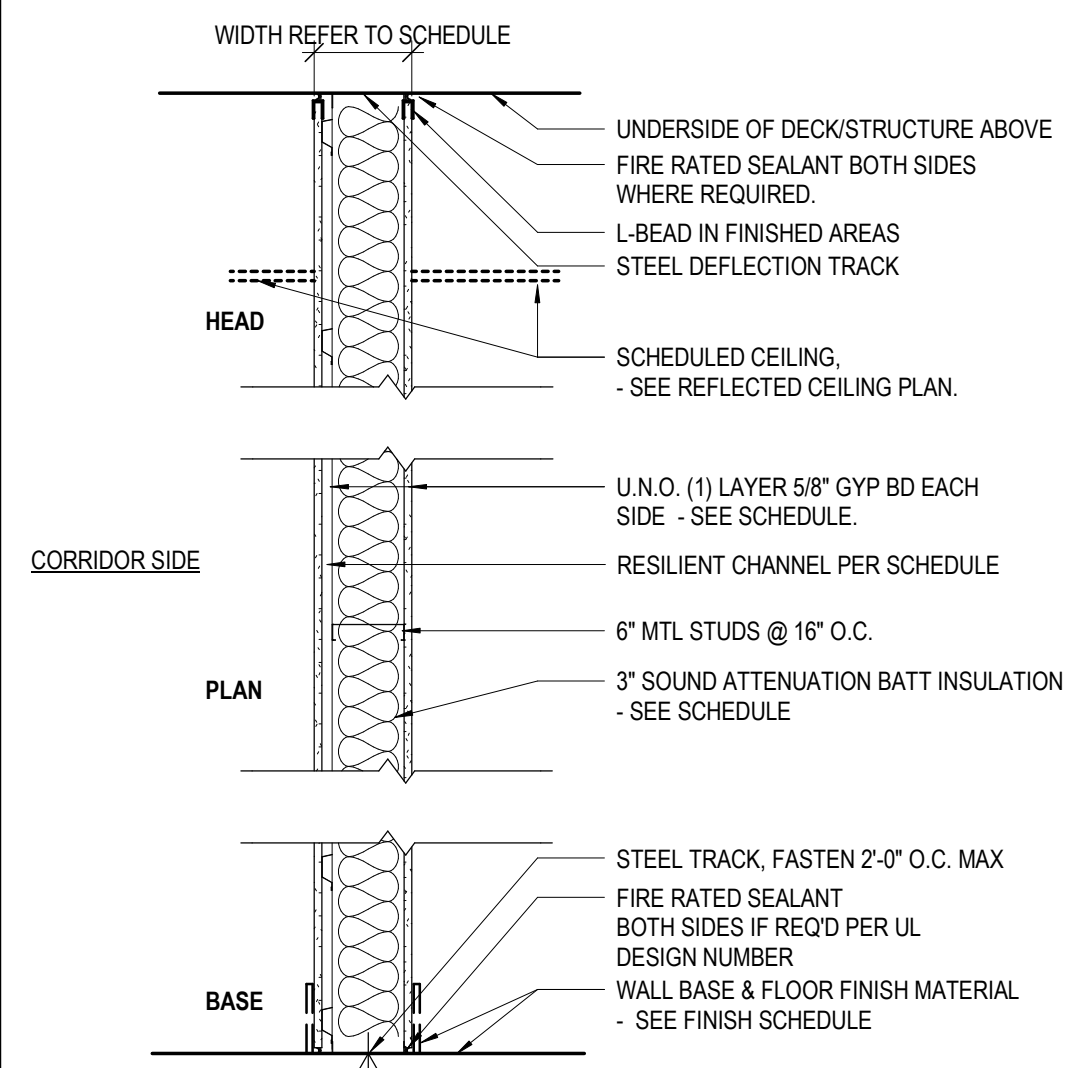
TYPE	WIDTH	STUD WIDTH	GYP. BD. - 1 SIDE	GYP. BD. - 2 SIDES	FIRE RATING	UL #	STC RATING	SOUND INSUL.	CODED NOTES	COMMENTS
2G	3 1/8"	2 1/2"	Yes	No	0HR					
2H	3 1/8"	2 1/2"	Yes	No	0HR			No 04		
2K	3 1/8"	2 1/2"	Yes	No	0HR			No 05		

TYPE 3 - 3 5/8" METAL STUD WALL TYPES



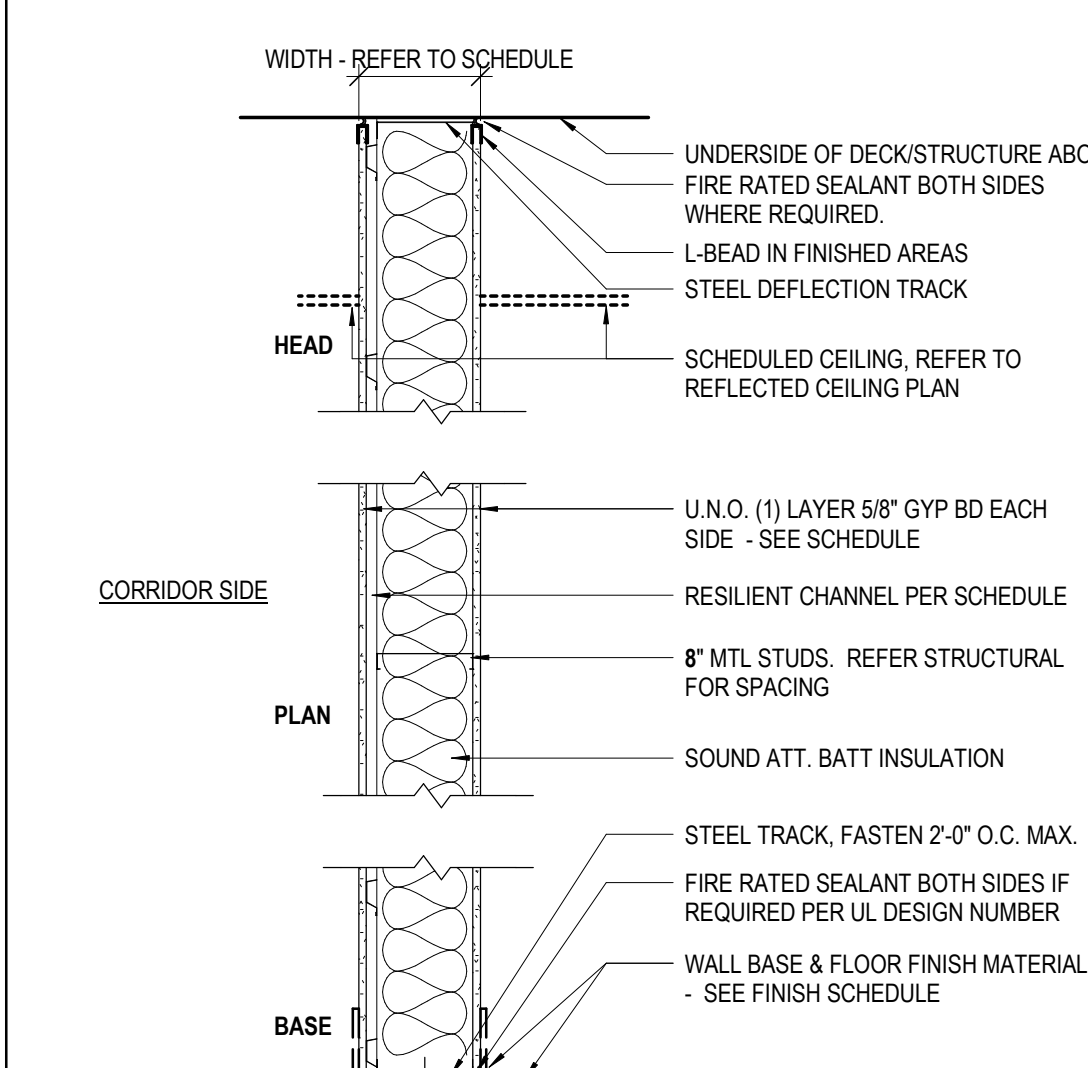
TYPE	WIDTH	STUD WIDTH	GYP. BD. - 1 SIDE	GYP. BD. - 2 SIDES	FIRE RATING	UL #	STC RATING	SOUND INSUL.	CODED NOTES	COMMENTS
4G	4 7/8"	3 5/8"	No	Yes	No	0HR				
4H	4 7/8"	3 5/8"	No	Yes	No	0HR		No 04		
4K	4 7/8"	3 5/8"	No	Yes	No	0HR		No 04		
3G	6 1/8"	3 5/8"	No	Yes	2HR	ULF U411 OR U412	48	No	04	2 LAYERS TYPE "X" GYPSUM BOARD
3H	6 1/8"	3 5/8"	No	Yes	1HR	ULF U465	59	Yes	04	3 LAYERS TYPE "X" GYPSUM BOARD W/ RESILIENT CHANNEL
3K	4 1/4"	3 5/8"	Yes	No	No	0HR		No	02, 05	AT TOILET WALLS PROVIDE BRACING AT 4'-0" O.C. VERTICALLY AND HORIZONTALLY.
3T	4 1/4"	3 5/8"	Yes	No	No	0HR		40	Yes	04

TYPE 4 - 6" METAL STUD WALL TYPES



TYPE	WIDTH	STUD WIDTH	GYP. BD. - 1 SIDE	GYP. BD. - 2 SIDES	TYPE "X" GYP. BD.	FIRE RATING	UL #	STC RATING	SOUND INSUL.	CODED NOTES	COMMENTS
4A	7 1/4"	6"	No	Yes	Yes	1HR	UL# U465	40 EST.	No	04	
4B	7 1/4"	6"	No	Yes	Yes	1HR	UL# U465	47 EST.	Yes	04	
4C	7 1/4"	6"	No	Yes	No	0HR		47 EST.	Yes	04	

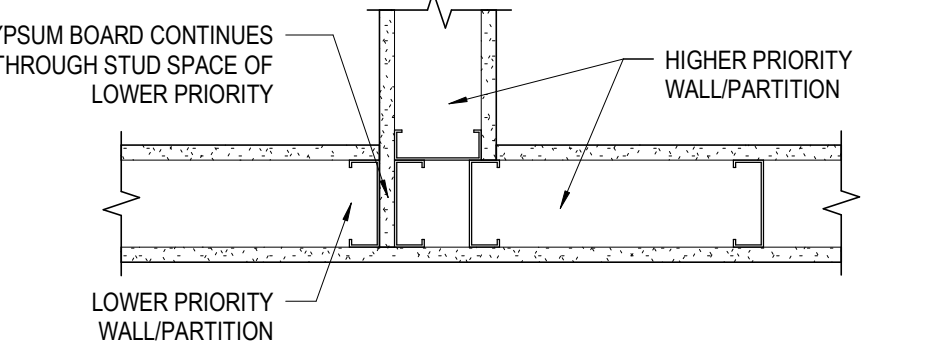
TYPE 5 - 8" METAL STUD WALL TYPES



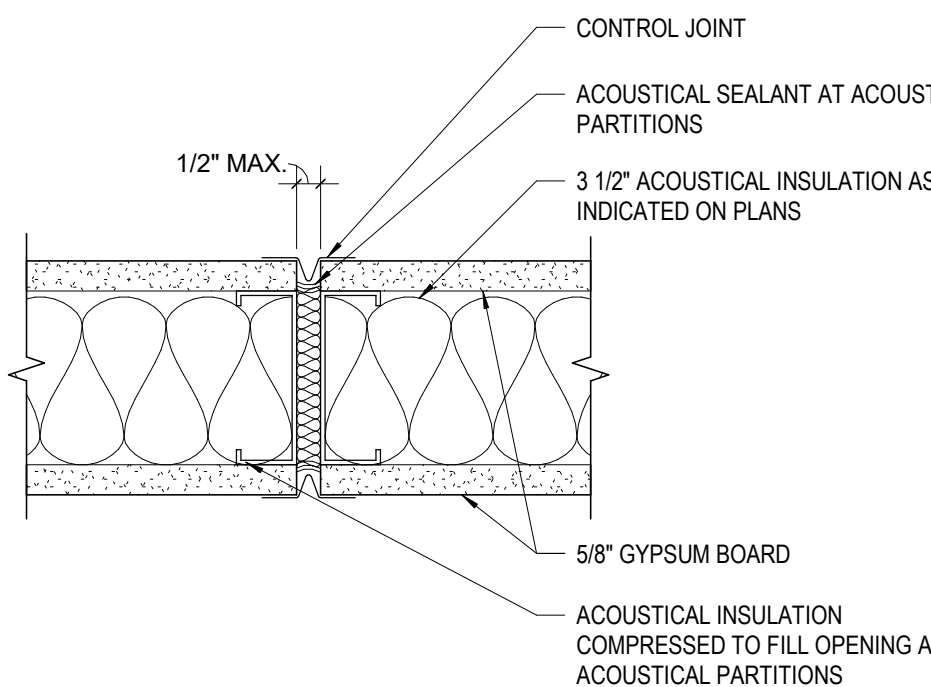
TYPE	WIDTH	Stud Width	GYP. BD. - 1 SIDE	GYP. BD. - 2 SIDES	TYPE "X" GYP. BD.	FIRE RATING	UL #	STC RATING	SOUND INSUL.	CODED NOTES	COMMENTS
5A	9 1/4"	7 7/8"	Yes	Yes	Yes	1HR	UL# U465		Yes	04	
5B	9 1/4"	8"	No	No	No	0HR			Yes	04, 12	
5C	10 3/4"	8"	No	Yes	Yes	1HR	UL# U452	59	Yes	04	3 LAYERS TYPE "X" GYP. BD.

WALL/PARTITION PRIORITY LEGEND

WALL/PARTITION FIRE RATING	PRIORITY
4 HOUR FIRE WALL	1
3 HOUR FIRE WALL	2
2 HOUR FIRE WALL	3
2 HOUR SMOKE BARRIER	4
2 HOUR SMOKE BARRIER	5
1 HOUR FIRE BARRIER	6
1 HOUR SMOKE BARRIER	7
1 HOUR FIRE PARTITION	8
SMOKE PARTITION	9
ACOUSTICAL PARTITION	10
NON RATED PARTITION	11
EXTERIOR WALL	12

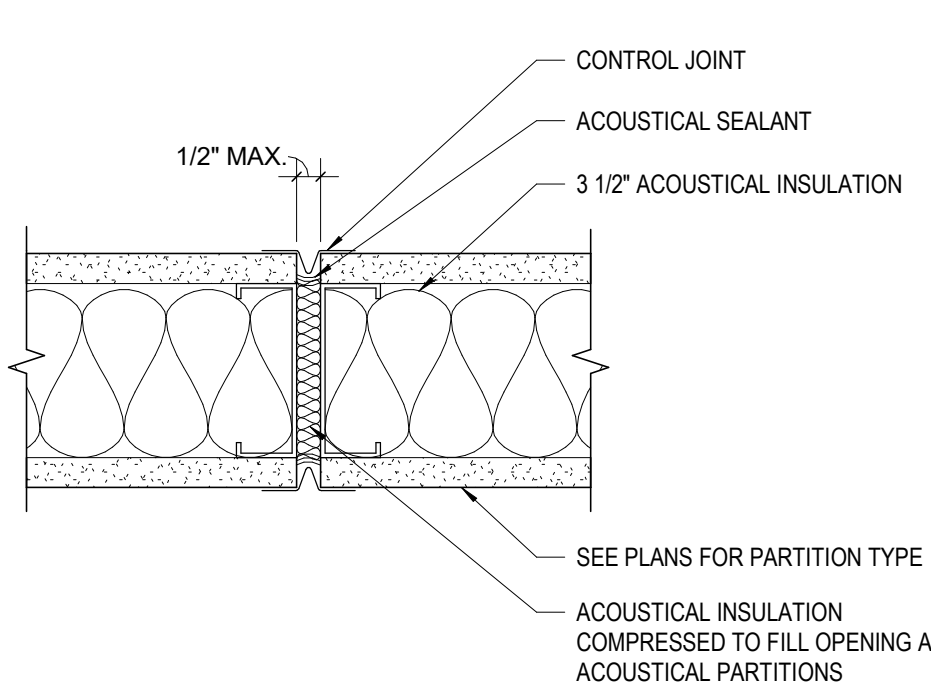


DETAIL 9C: CONTROL JOINT @ 1 HR PARTITION

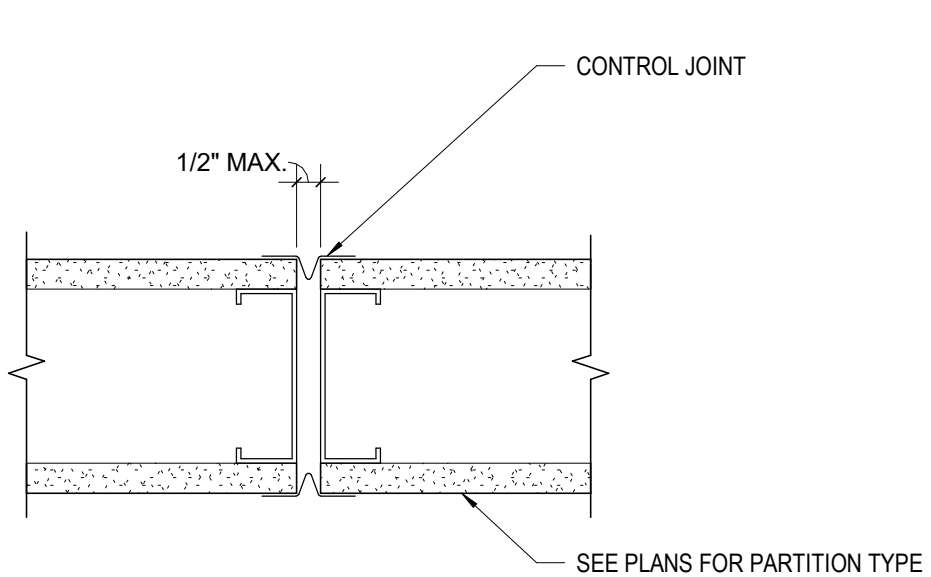


PER USE DETAIL

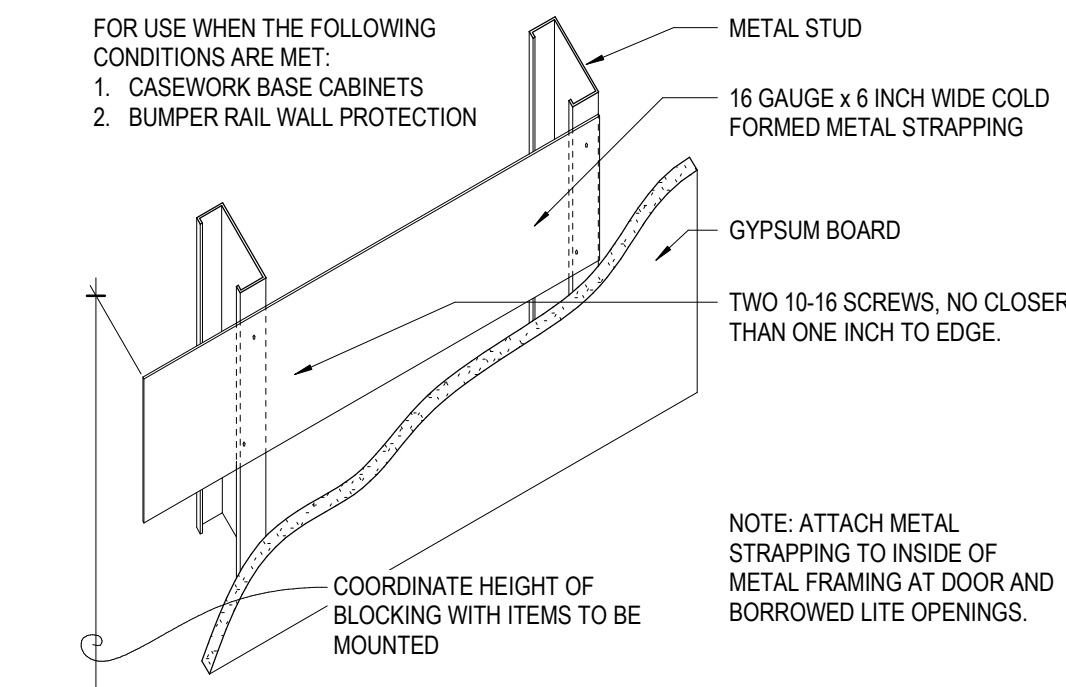
DETAIL 9B: ACOUSTICAL CONTROL JOINT



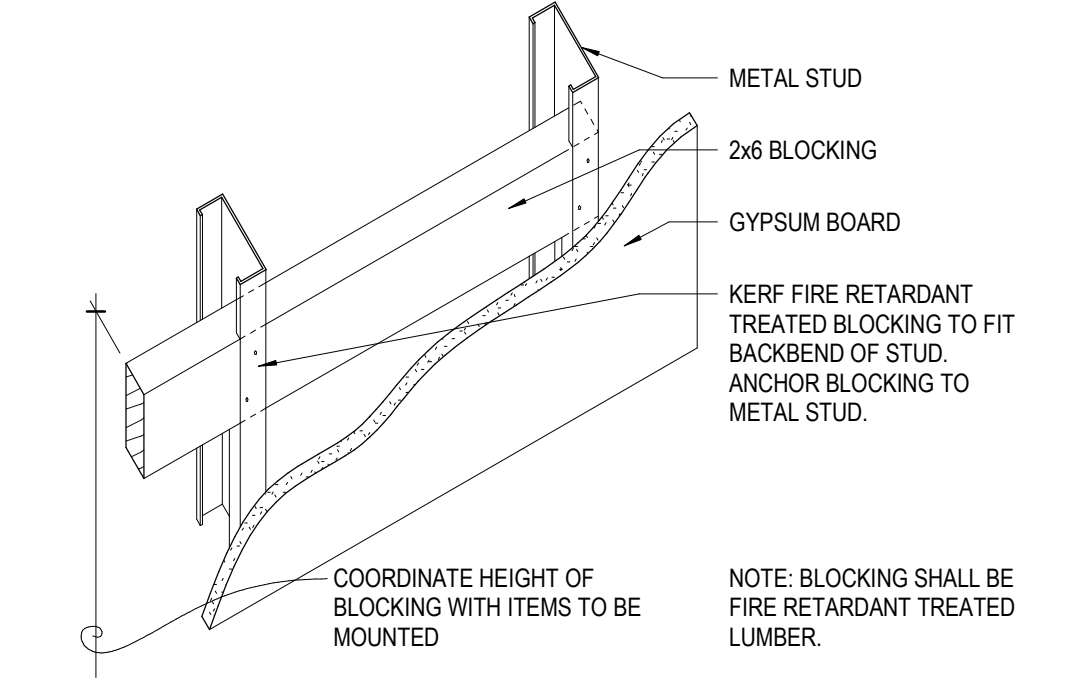
DETAIL 9A: TYPICAL CONTROL JOINT



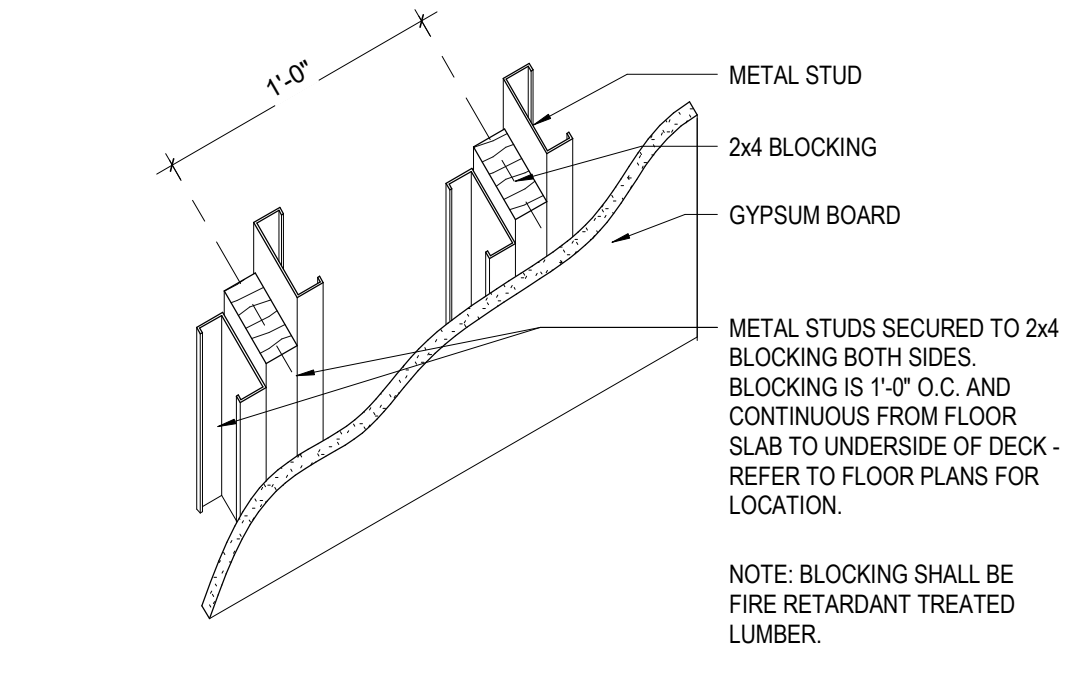
DETAIL 7D: METAL STRAPPING - VERTICAL / AXON



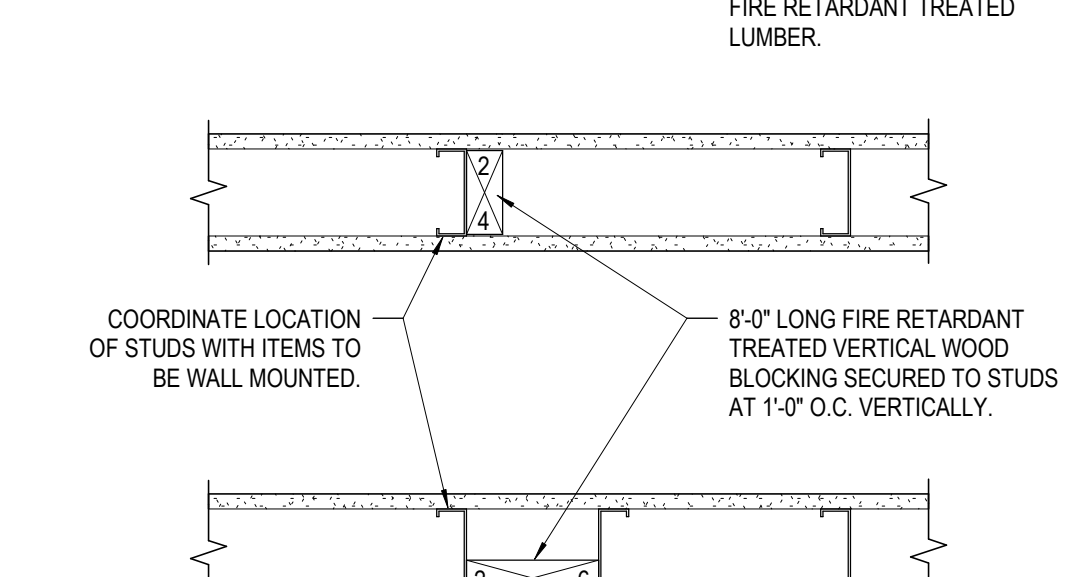
DETAIL 7C: WOOD BLOCKING - HORIZONTAL / AXON



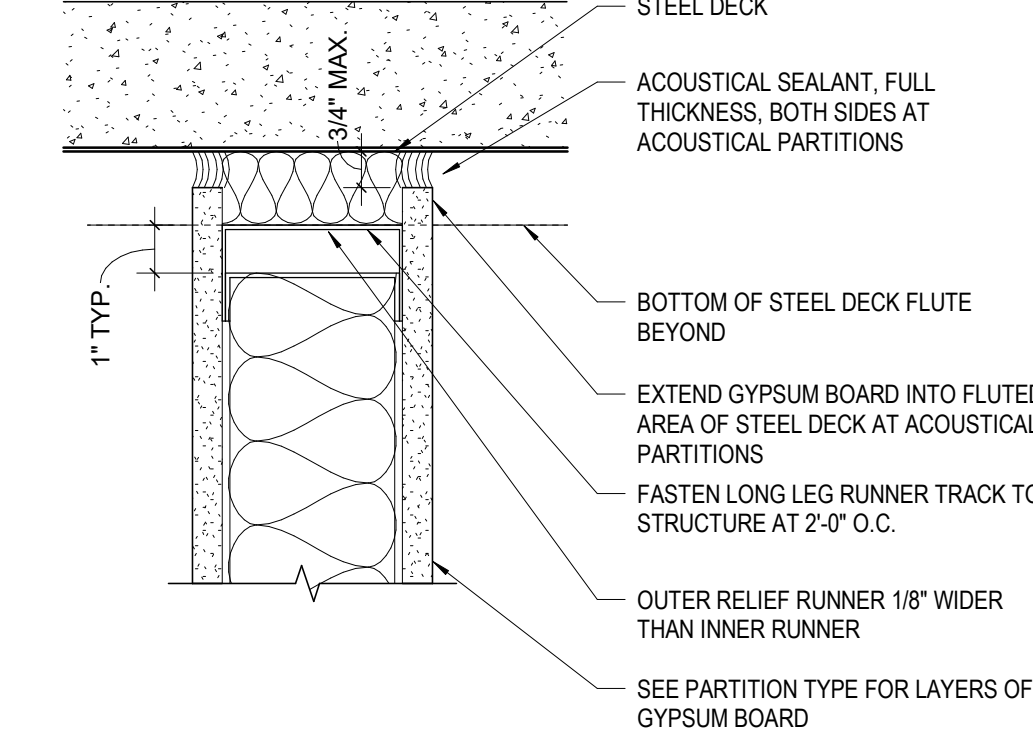
DETAIL 7B: WOOD BLOCKING - VERTICAL / AXON



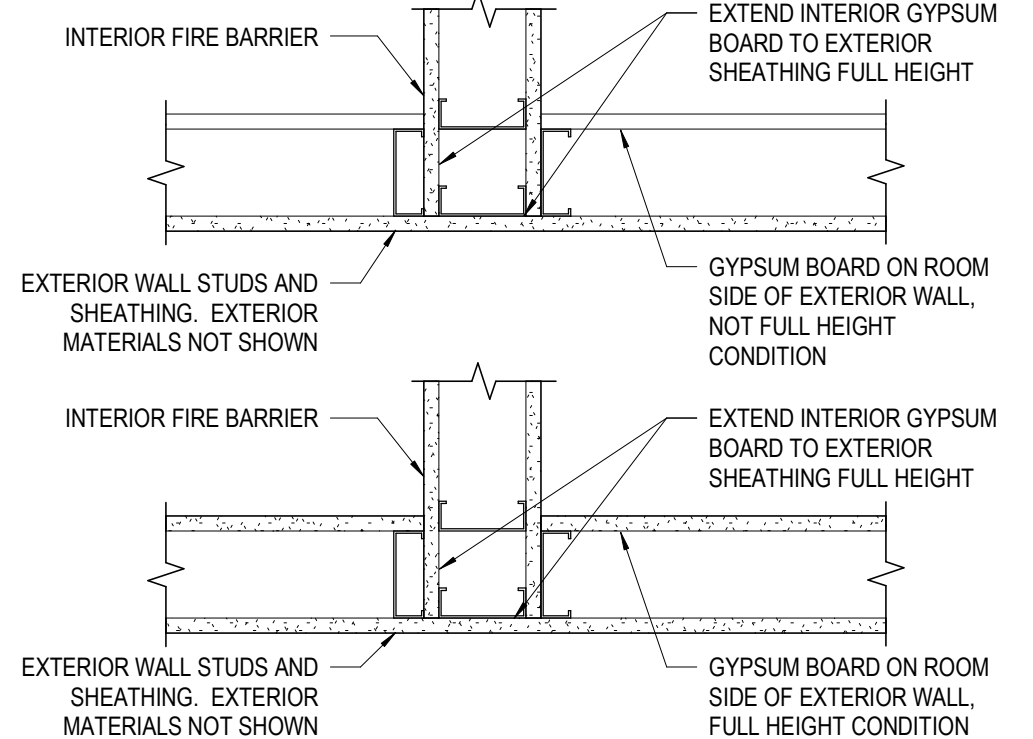
DETAIL 7A: WOOD BLOCKING - PLAN



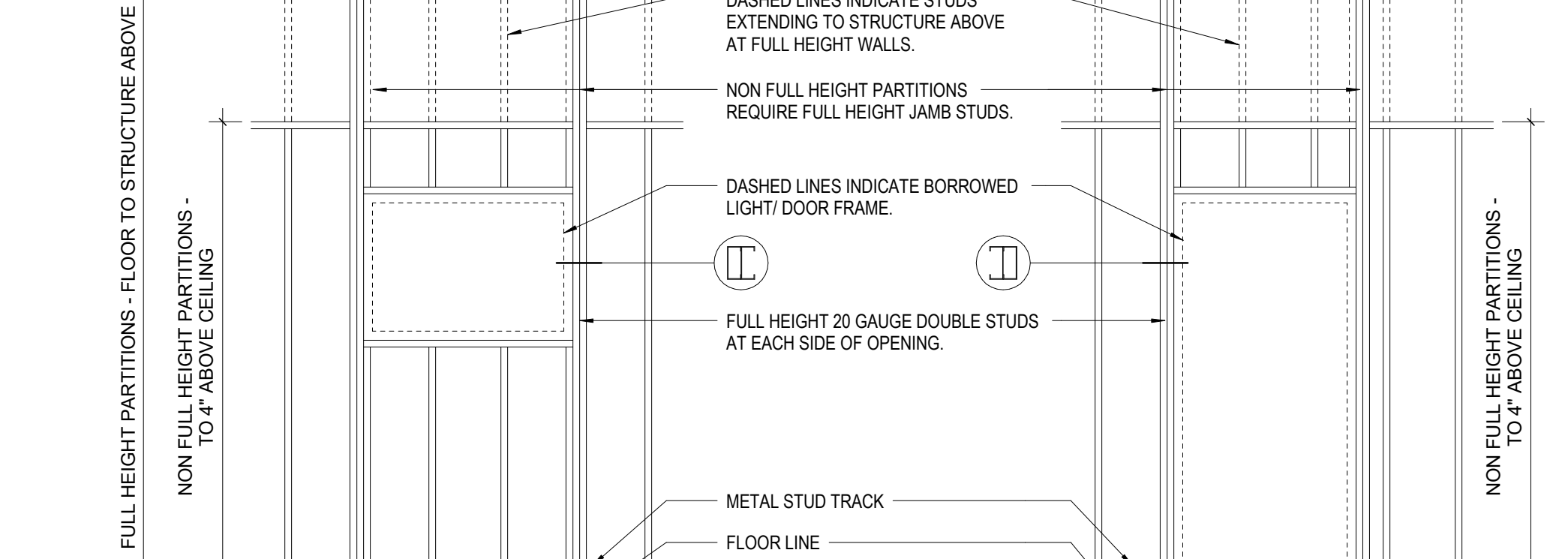
DETAIL 5B: STEEL DECK



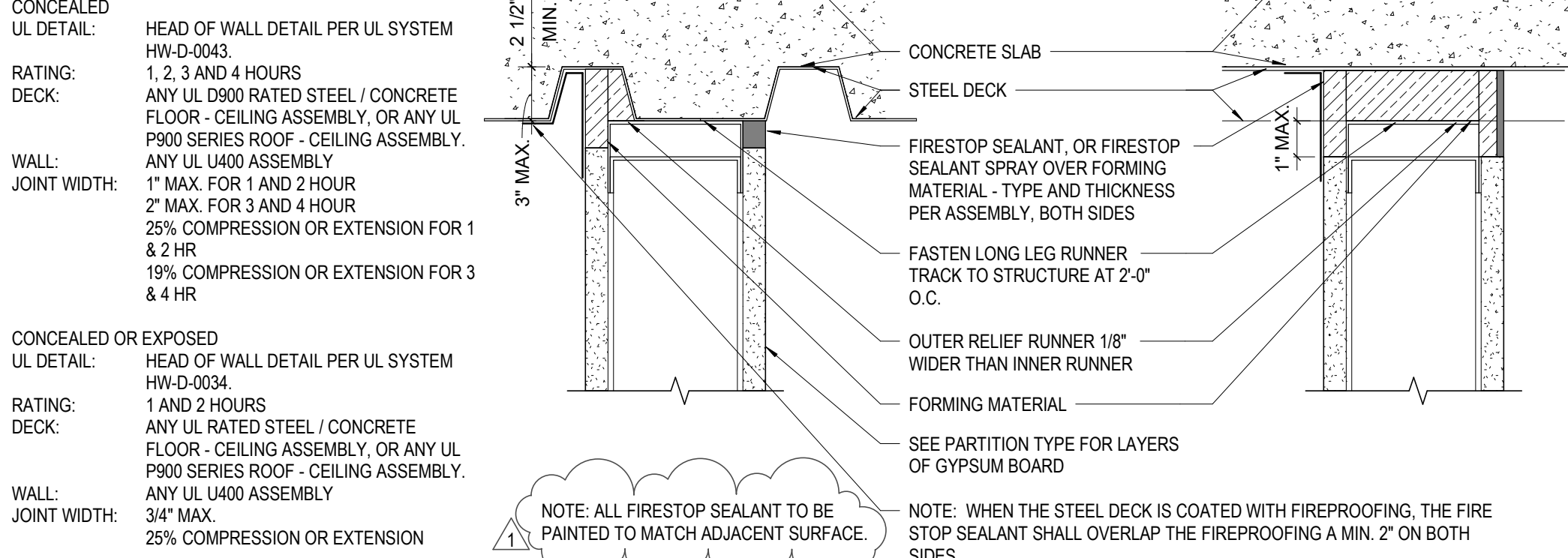
DETAIL 6: FIRE BARRIER AT EXTERIOR WALL



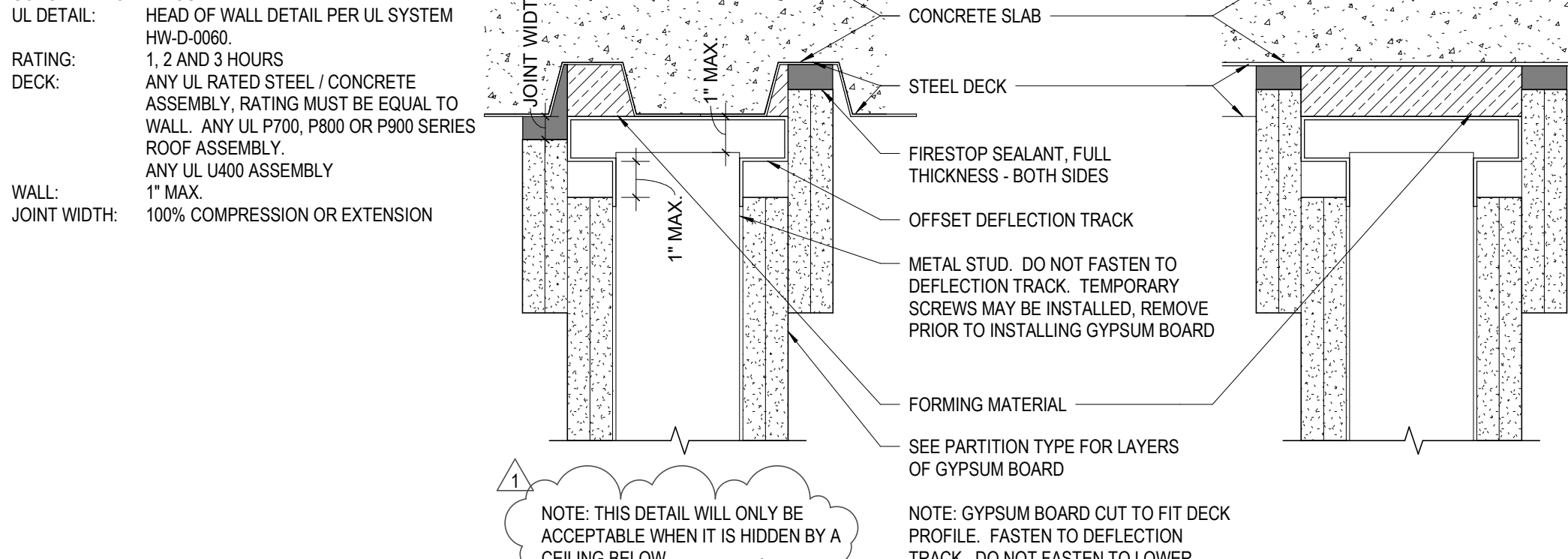
BORROWED LITE & DOOR OPENING FRAMING ELEVATION



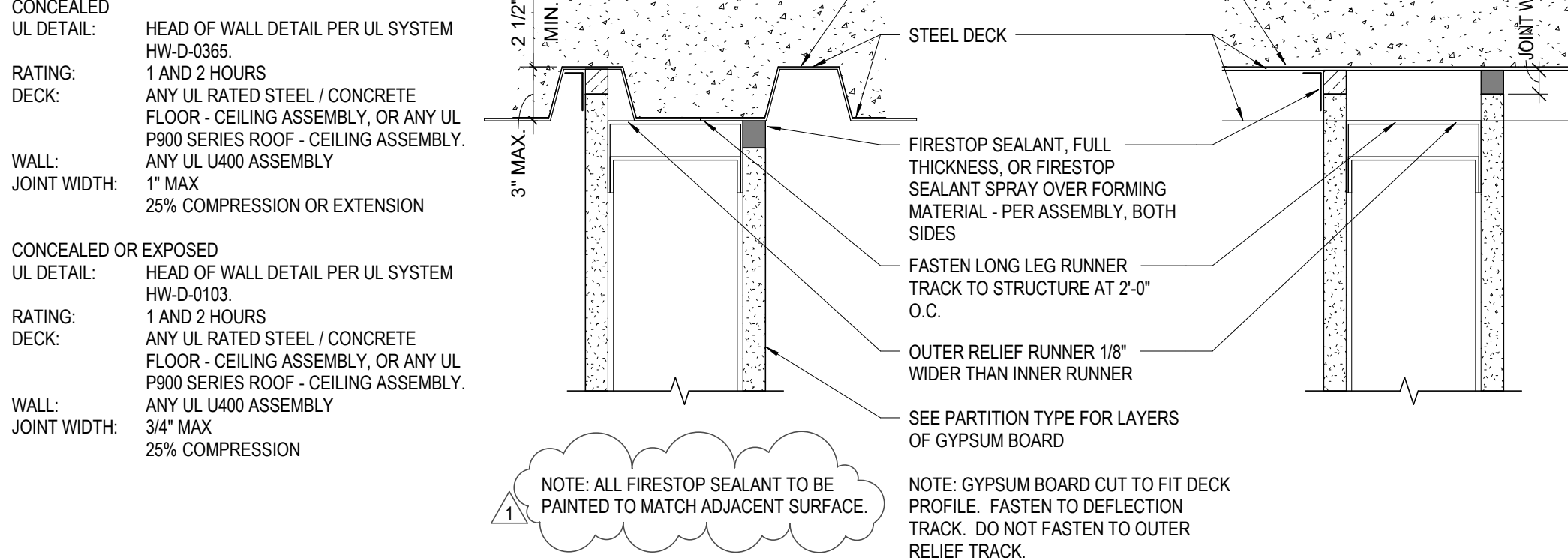
DETAIL 1C: STEEL DECK



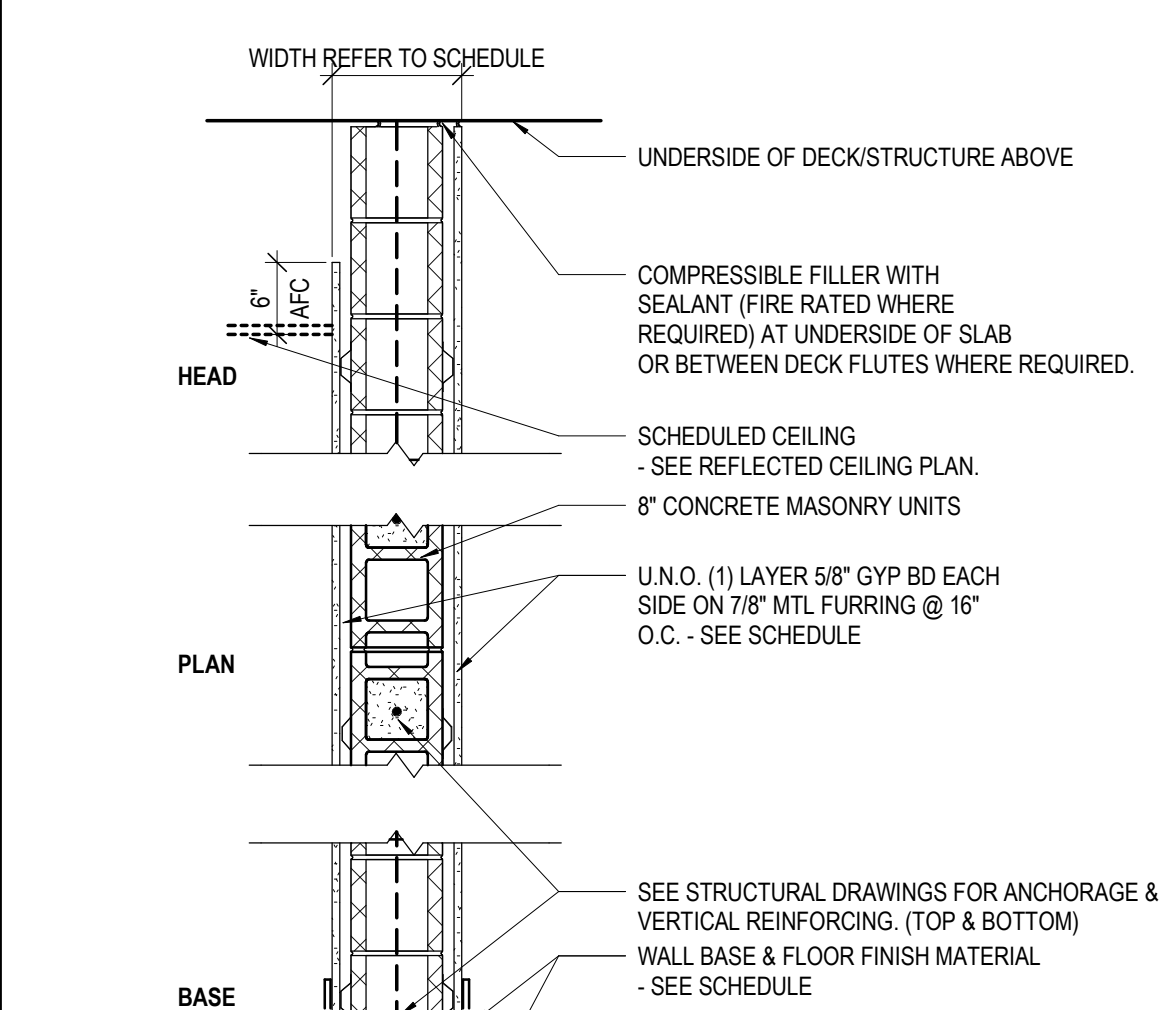
DETAIL 1B: STEEL DECK



DETAIL 1B: STEEL DECK

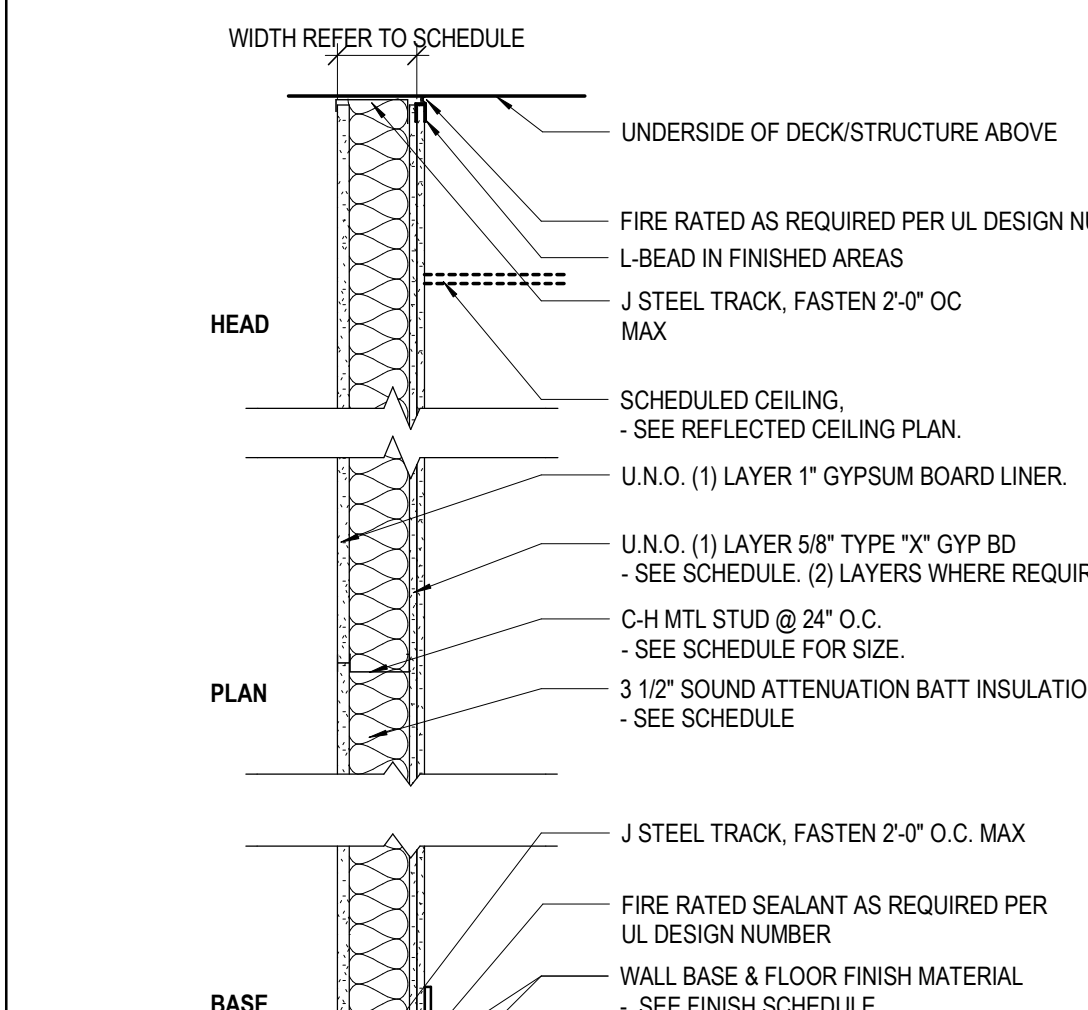


TYPE 8 - 8" CONCRETE MASONRY WALLS



TYPE	WIDTH	STUD WIDTH	GYP. BD. - 1 SIDE	GYP. BD. - 2 SIDES	FIRE RATING	UL #	STC RATING	SOUND INSUL.	CODED NOTES	COMMENTS
8K	7 5/8"	No	No	No	2HR	ULF U905	46+	No	08	7/8\"
8L	9 1/8"	Yes	No	No	2HR	ULF U905	46+	No	10	3 5/8\"
8K	11 7/8"	Yes	No	No	2HR	ULF U905	46+	No	10	3 5/8\"

TYPE S - SHAFT WALL TYPES



TYPE	WIDTH	STUD WIDTH	GYP. BD. - 1 SIDE	GYP. BD. - 2 SIDES	"TYPE" X" GYP. BD.	FIRE RATING	UL #	STC RATING	SOUND INSUL.	CODED NOTES	COMMENTS
S4	5 1/4"	4"	No	Yes	Yes	2HR	UL# U437	43+	No	06	2 LAYERS OF TYPE "X" GYP.

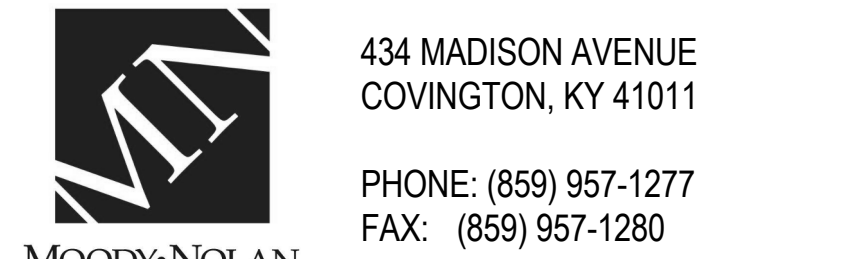
GENERAL NOTES & WARNING

- ALL DIMENSIONS TO FACE OF WALL UNLESS OTHERWISE NOTED.
- USE 5/8" WATER RESISTANT GYP. BD. ON ALL WET WALLS, UNLESS OTHERWISE NOTED.
- USE CEMENT BOARD FOR ALL WALLS TO RECEIVE CERAMIC TILE, UNLESS OTHERWISE NOTED.
- FIRE SAFE ALL JOINTS AND PENETRATIONS AT FIRE RATED PARTITIONS.
- UL NUMBERS LISTED APPLY ONLY TO THE TESTED MANUFACTURERS. EQUAL MANUFACTURERS EQUIVALENT ASSEMBLY INFORMATION MUST BE APPROVED BY ARCHITECT.
- INSULATION MUST EXTEND FULL HEIGHT OF PARTITION, WHERE SOUND ATTENUATION BATT IS INDICATED IN PARTITIONS, INSTALL ACOUSTIC SEALANT AT BOTH SIDES, ALONG THE TOP AND BOTTOM, AND AT INTERSECTING PARTITIONS.
- WHERE 3 5/8", 4" OR 6" STUD WALLS ARE INDICATED, SEE SPECIFICATIONS FOR HEIGHT LIMITS.
- REFER TO FINISH SCHEDULE FOR FINISHES.
- PROVIDE ACOUSTIC SEALANT AT TOP & BOTTOM OF PARTITION AS REQUIRED BY STC RATING.

CODED NOTE LEGEND

- BRACE EACH STUD @ 4'-0" O.C. TO BACK-UP WALL FOR ENTIRE HEIGHT OF PARTITION.
- BRACE EACH STUD @ 8'-0" O.C. TO BACK-UP WALL FOR ENTIRE HEIGHT OF PARTITION.
- SMOKE TIGHT SEAL SHALL BE PROVIDED AT TOP, BOTTOM AND ENDS OF WALL AND AT ALL PENETRATIONS.
- FULL HEIGHT PARTITION. TERMINATE GYP. BD. AND STUDS AT DECK/STRUCTURE ABOVE.
- STOP GYP. BD. AND STUDS 6" A/C. BRACE PARTITION TO DECK/STRUCTURE PER METAL STUD MANUFACTURER DESIGN LOADING CRITERIA.
- FULL HEIGHT SHAFT WALL. TERMINATE GYP. BD. AND STUDS AT DECK/STRUCTURE ABOVE.
- FULL HEIGHT PARTITION. TERMINATE GYP. BD., PLYWOOD AND STUDS AT DECK/STRUCTURE ABOVE.
- FULL HEIGHT PARTITION. TERMINATE CMU AT DECK/STRUCTURE ABOVE.
- STOP CMU FULL COURSE ABOVE FINISH CEILING. BRACE WALL TO STRUCTURE PER STRUCTURAL DRAWINGS.
- FULL HEIGHT PARTITION. TERMINATE CMU AT DECK ABOVE. STOP FURRING AND GYP. BD. @ 6" ABOVE FINISH CEILING.
- STOP WALL FULL COURSE ABOVE FINISH CEILING. BRACE WALL TO STRUCTURE PER STRUCTURAL DRAWINGS.
- WALLS WILL NOT CONTINUE TO LEVEL 2 DECKING BUT WILL SUPPORT AN INDEPENDENT CEILING AT COMMON AREA KITCHEN. SEE SECTION VIEW AT KITCHEN.

#	DATE	CHANGE DESCRIPTION
1	02/14/2020	ADDENDUM #1



DRAWING TITLE:

WALL TYPES AND DETAILS

